



Stewart Street, London, E14

BUTLER  STAG



Superb two bedroom two bathroom riverside apartment with a private balcony overlooking the water.



- Two Bedrooms
- River Facing With Private balcony
- Private Parking
- Unfurnished
- First Floor
- Secure Gated Development
- Moments From Canary Wharf
- Available Immediately

A superb two-bedroom first floor apartment set in a sought-after riverside development. Featuring a spacious open-plan reception / dining area with access out onto a private balcony which provides the perfect setting for a morning coffee or evening meal overlooking the water, the property further comprises of two double bedrooms and two bathrooms.

Residents enjoy a peaceful waterside setting with excellent transport links nearby, including DLR and Underground services, providing easy access to Canary Wharf and the City. This an ideal home for professionals sharers or a couple seeking work-from-home space, this property is offered unfurnished and is available immediately !

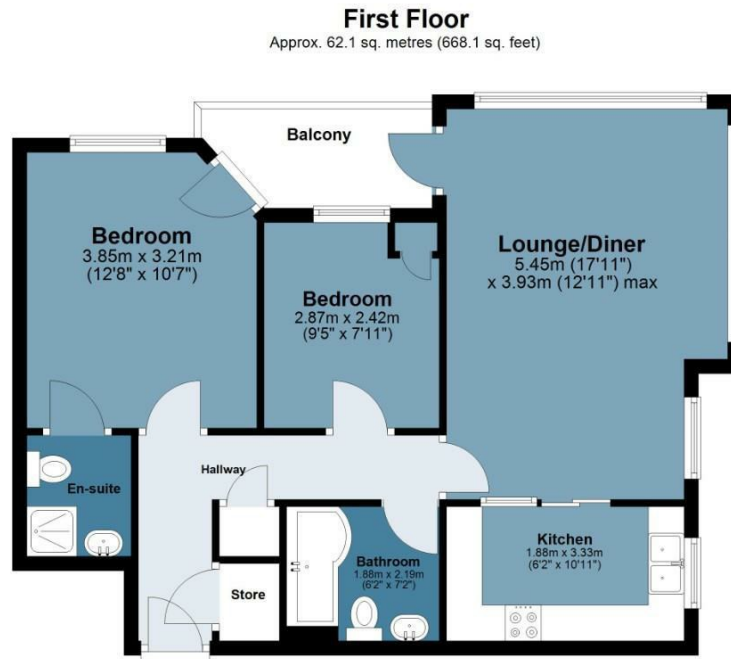
EPC Rating B





Galleons View

Approx. Gross Internal Area 62.1 Sq M (668.1 Sq Ft)



Measurements are approximate and for illustration purposes only. While we do not doubt the accuracy and completeness, we advise you conduct a careful independent assessment of the property to determine monetary value.
© @modephoto.uk www.modephoto.co.uk

IMPORTANT NOTICE - These particulars have been prepared in good faith and they are not intended to constitute part of an offer or contract. We have not performed a structural survey on this property and the services, appliances and specific fittings have not been tested. All photographs, measurements, floor plans and distances referred to are given as a guide and should not be relied upon.

BUTLER & STAG

☎ 020 8102 1236

🏠 508 Roman Road, Bow, London, E3 5LU

✉ bow@butlerandstag.com

www.butlerandstag.uk